

Gateway Business Park

For Lease

DC Warehouse
25,000± SF Available



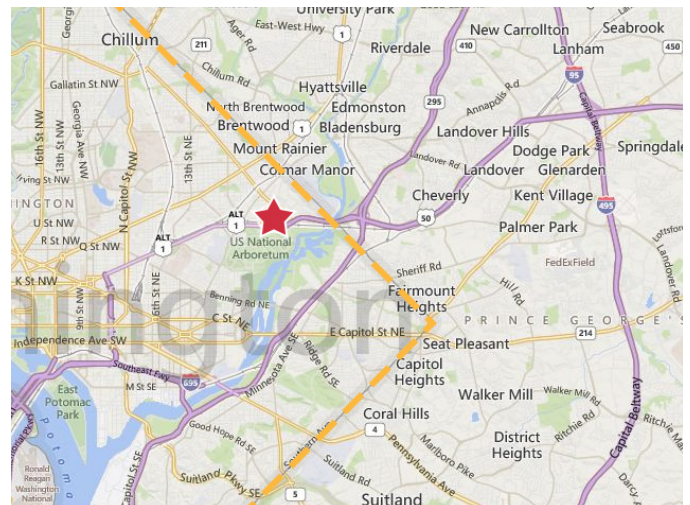
3150-3160 V Street, NE

Washington, DC 20018

Property Features

- 25,000± SF available (including 5,462± SF of office on two floors)
- 4,000± SF of cooler space
- Four recessed docks
- 1/3,000 SF parking ratio
- 18' clear ceiling height
- Quick access to Route 50 (New York Avenue), the Baltimore-Washington Parkway, and the Capital Beltway (I-495/I-95)
- Convenient to serve Washington DC and Maryland

DC's Premier Flex/Industrial Park



Owned by:



TERRENO

Lance Schwarz

+1 301 918 2938

lschwarz@naimichael.com

Ali Fardshisheh

+1 202 415 2541

ali@industrious.net

Peter Burleigh

+1 301 918 2913

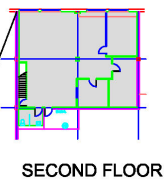
pburleigh@naimichael.com

Naimichael

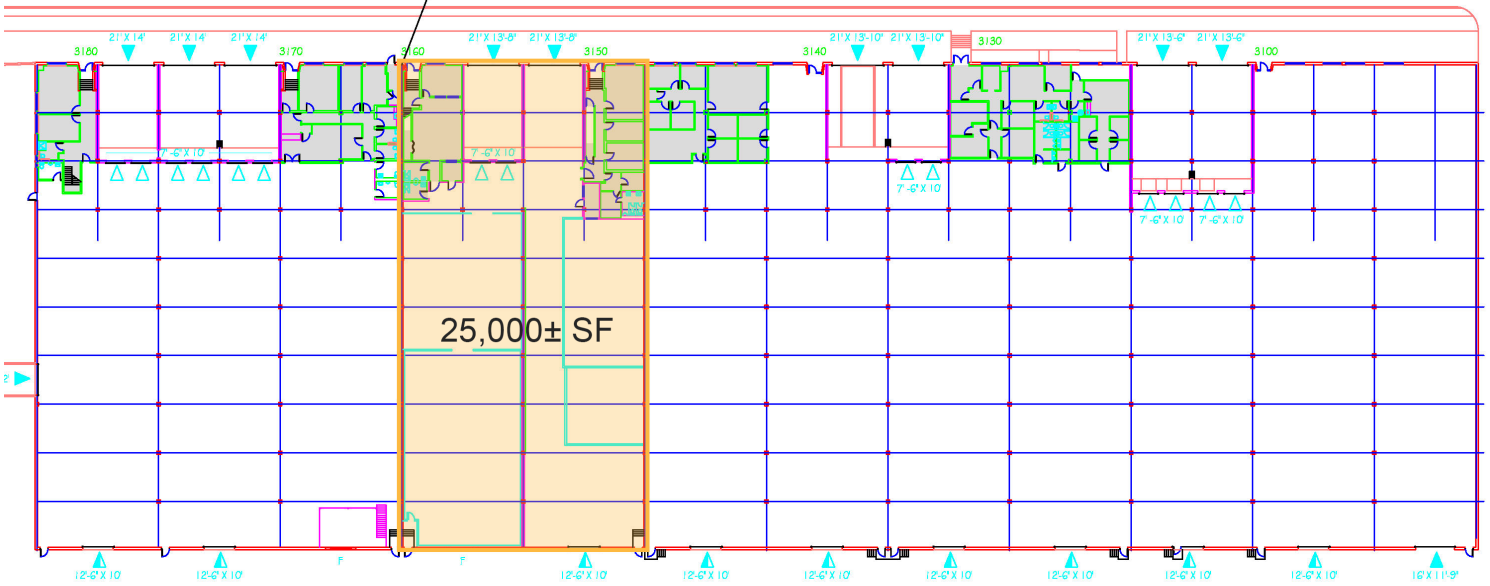


10100 Business Parkway
Lanham, Maryland 20706
+1 301 459 4400
naimichael.com

Gateway Business Park
Close to Downtown DC &
Major Highways



SECOND FLOOR



V STREET INDUSTRIAL PARK
3100-3180 V Street Northeast
Washington DC, 20018
1-18-15

- DRIVE-IN DOOR
- DOCK DOOR
- F** FUTURE DOCK DOOR
- G** GLASS KNOCK-OUT PANEL/FUTURE DOCK DOOR



The information contained herein has been given to us by the owner of the property or other sources we deem reliable. We have no reason to doubt its accuracy, but we do not guarantee it. Floor plans, site plans and other graphic representations of this property have been reduced and reproduced, and are not necessarily to scale. All information should be verified prior to purchase or lease.